

Rising Stars of SQI

Lecture Sponsored by the Peptide Synthesis Core & ANTEC

Silvia Minardi

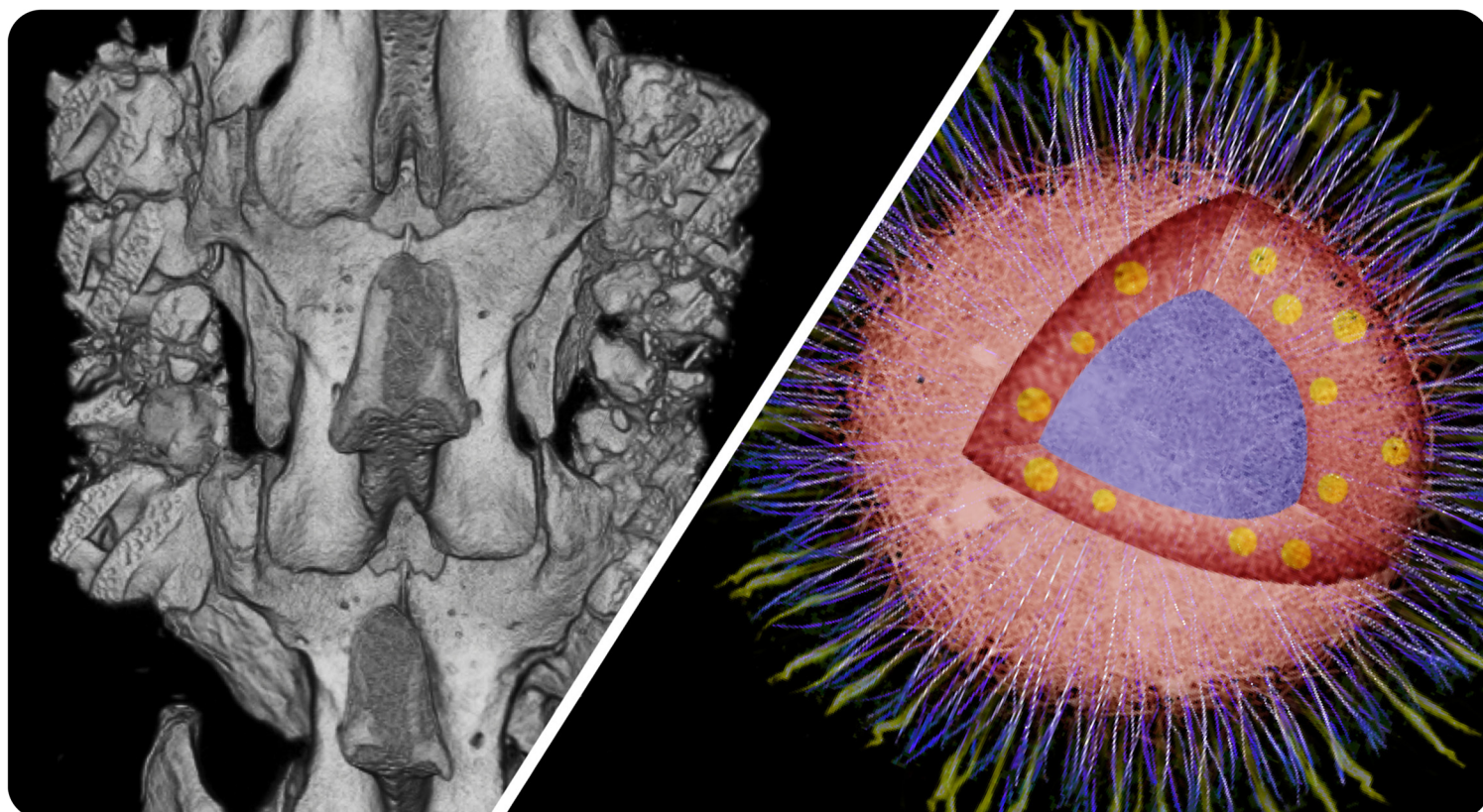
Hsu Laboratory

How to Grow Bone

Sijia Yi

Scott Laboratory

*Cardiovascular Immunotherapy:
Engineering Nanocarriers
for Selective Modulation of
Inflammatory Cells*



Thursday, January 16, 2020, 2:30-4:30 PM

2:30pm: Silvia Minardi Lecture

3:15pm: Poster Session

3:45pm: Sijia Yi Lecture

Refreshments will be provided!

Simpson Querrey Auditorium

Simpson Querrey Biomedical Research Center | 303 East Superior, 1st Floor | Chicago Campus

For more information please visit our website at www.sqi.northwestern.edu or contact Alexandra Kolot at a-kolot@northwestern.edu or 312-503-6708.